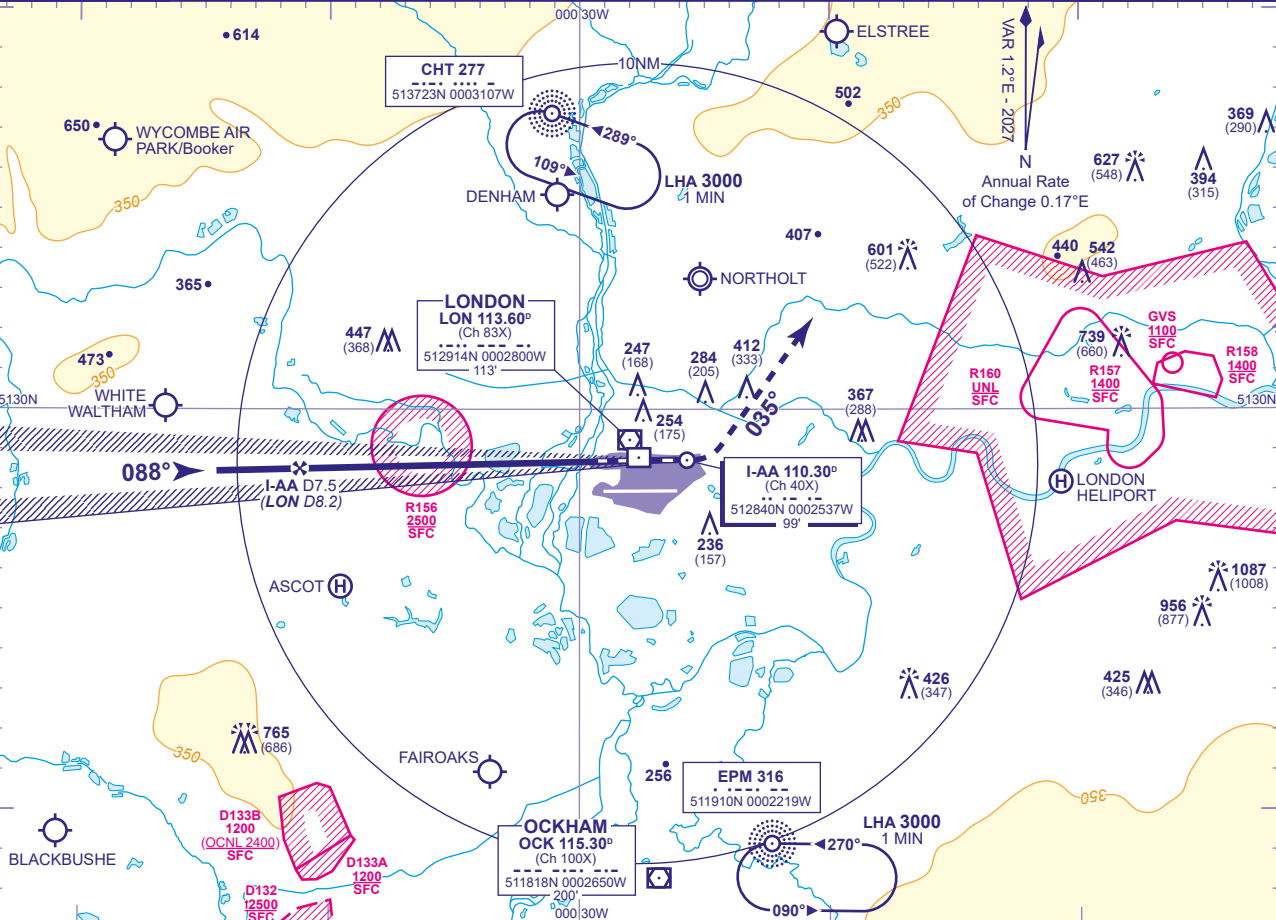


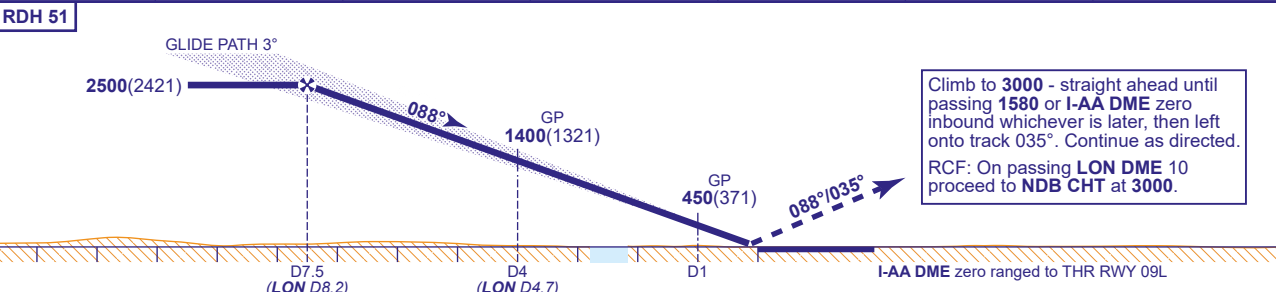
INSTRUMENT APPROACH - ICAO

LONDON HEATHROW
ILS/DME I-AA
RWY 09L
(ACFT CAT A,B,C,D)

	APP 119.730, 120.400, 127.525, 134.980	HEATHROW DIRECTOR	AD ELEVATION 83	TRANSITION ALTITUDE 6000
	TWR 118.505, 118.705, 124.480	HEATHROW TOWER	THR ELEVATION 79	
	RAD 125.625, 127.525	HEATHROW RADAR	OBSTACLE ELEVATION 1087 AMSL (1008) (ABOVE THR)	
	ATIS 128.080, 113.750, 117.000	HEATHROW INFORMATION	BEARINGS ARE MAGNETIC	



RECOMMENDED PROFILE GLIDE PATH 3.0°, 318FT/NM						
DME I-AA	7	6	5	4	3	2
ALT(HGT)	2360(2281)	2040(1961)	1720(1641)	1400(1321)	1080(1001)	770(691)



Aircraft Category		A	B	C	D	Rate of descent FT/MIN	G/S KT	160	140	120	100	80
OCA (OCH)		CAT I	CAT II	CAT I	CAT II		FT/MIN	850	740	640	530	420
VM(C)OCA (OCH AAL)		Total Area	770(687)	770(687)	940(857)	940(857)						

AIRCRAFT UNABLE TO RECEIVE DME I-AA
Advise ATC. Equivalent radar ranges will be provided when established on the localiser approaching the nominal FAP and 4NM points.

NOTES

- Aircraft will normally be radar vectored from the STAR Holding/Initial Approach Fixes.
- Ranging information is provided by ILS-dedicated DME facilities. DME values derived to the nearest 0.1NM from VOR DME LON are also provided for the FAP and 4NM check altitude/height.